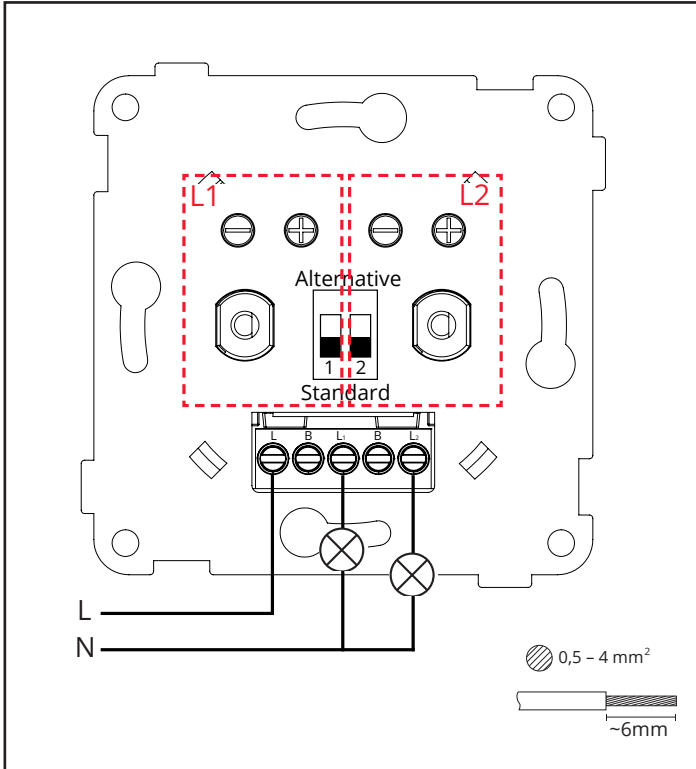


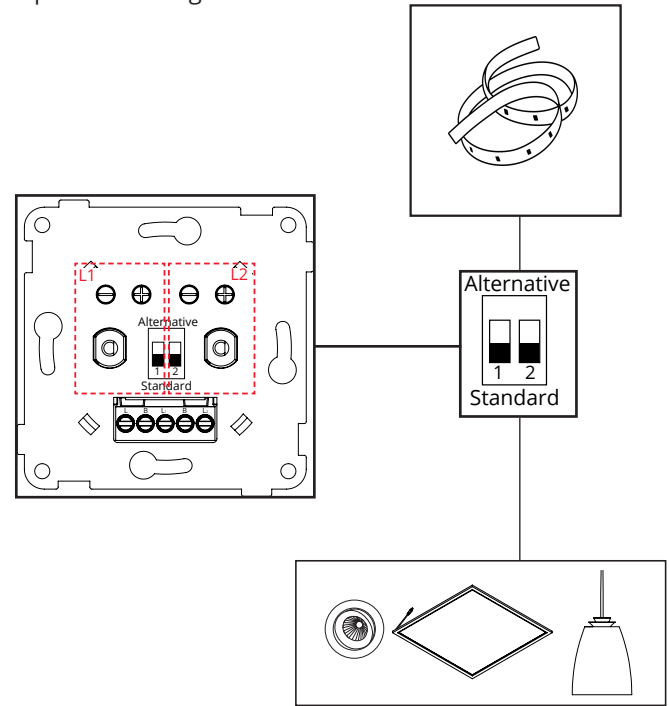
LEDDim 2x100



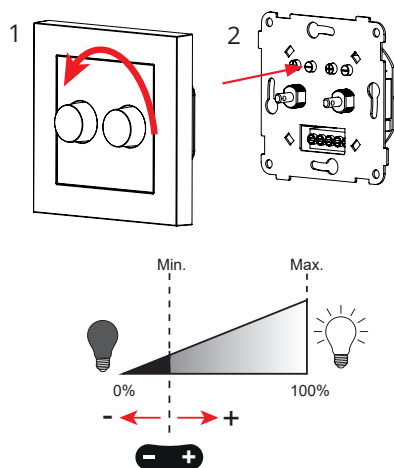
220-240V, 50/60Hz, 2x3-100VA, -20°C to 35°C



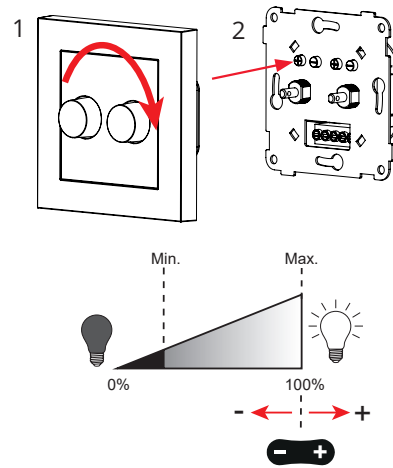
Dipswitch settings



- NO:** Minimum dimmenivåjustering
- DA:** Minimum justering af dæmpningsniveau
- SE:** Minsta justering av dimningsnivå
- EN:** Minimum dimming level adjustment
- FR:** Réglage du niveau de gradation minimal
- NL:** Regelbaar niveau van minimale dimmingsgraad
- DE:** Anpassung der minimalen Dimmstufe
- FI:** Minimi himmennystaso



- NO:** Maksimum dimmenivåjustering
- DA:** Maximum justering af dæmpningsniveau
- SE:** Max justering av dimningsnivå
- EN:** Maximum dimming level adjustment
- FR:** Réglage du niveau de gradation maximal
- NL:** Regelbaar niveau van maximale dimmingsgraad
- DE:** Anpassung der maximalen Dimmstufe
- FI:** Max himmennystaso



NORWAY
SG Armaturen AS

Skytterheia 25
N-4790 Lillesand

Tel: +47 37 50 03 00
firmapost@sg-as.no
www.sg-as.no

SWEDEN

SG Armaturen AB
Tel: +46 31 81 71 10
info@sg-ab.se
www.sg-ab.se

FINLAND

SG Armaturen Oy
Tel: +358 02 07 30 39 60
info@sg-oy.fi
www.sg-oy.fi

DENMARK

SG Armaturen A/S
Tel: +45 70 70 72 13
info@sg-as.dk
www.sg-as.dk

UNITED KINGDOM

SG Lighting LTD
Tel: +47 37 50 03 00
info@sglighting.co.uk
www.sglighting.co.uk

FRANCE

SG Lighting SA/NV
Tel: +33(0) 4 94 93 00 00
info.france@sglighting.fr
www.sglighting.net

BENELUX

SG Lighting SA/NV
Tel: +32(0) 15 20 72 71
info.benelux@sglighting.net
www.sglighting.net

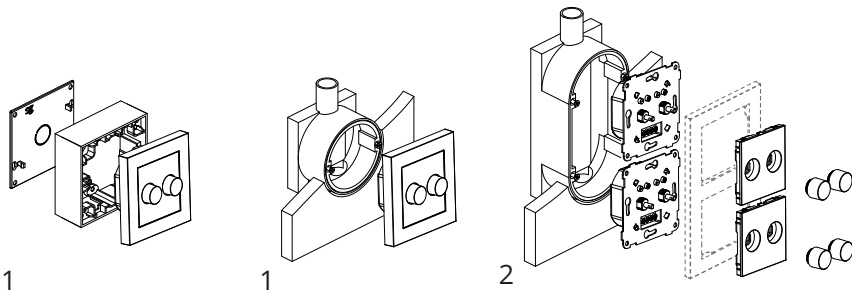
GERMANY





SG Leuchten GmbH
Tel: +49 40 23 99 44 59
info@sg-leuchten.de
www.sg-leuchten.de

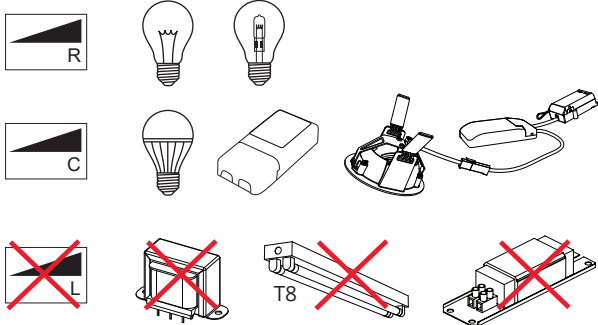
INTERNATIONAL

SG Lighting Co Ltd.
Tel: +86 769 88 49 20 88
cindy@sgdgc.com
www.sg-as.com

Maximum load**



Load type	 R	 C	 R+C	 L
1 Single dimmer	2x100W	2x80W	2x80W	X
2 Two or more dimmers	2x75W	2x60W	2x60W	X



NO: Kan kun installeres og vedlikeholdes av en registrert installasjonsvirksomhet.

DK: Må kun installeres og vedlikeholdes af uddannet elektriker.

SE: Skall installeras och underhållas av behörig elektriker.

EN: Only to be installed and maintained by an authorized electrician.

FR: Doit être installé et maintenu par un électricien qualifié.

NL: Mag alleen geïnstalleerd en onderhouden worden door een bevoegde elektricien.

DE: Dieses Produkt darf nur durch autorisiertes Personal (z.B. Elektro-Installateur) angeschlossen, in Betrieb genommen und gewartet werden.

FI: Asentaa ja huoltaa saa vain valtuutettu sähköasentaja

NO: Skru av strømmen før montering.

DK: Sluk for strømmen inden montering.

SE: Stäng av strømmen innan montering.

EN: Turn off power before installing.

FR: Couper le courant avant l'installation.

NL: Stroom uitschakelen voor u het toestel installeert.

DE: Vor Installationsarbeiten den Strom abschalten.

FI: Sammuta virta ennen kytkemistä